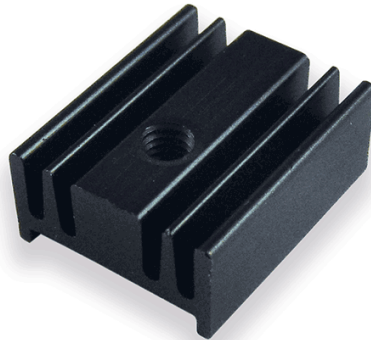


## Product features PR 5/15/SE/2

---

Semiconductor casing:	TO-220
Semiconductor mounted by:	Screw
Heat sink mounted by:	Srew-On
Finish	Black Anodised
Material	AlMgSi0,5
Width [mm]:	12.0
Height [mm]:	6.5
Length [mm]:	15.0
Min. thermal resistance [K/W]:	36.0



## Further information

---

- Extruded heatsink especially for semiconductor case TO220 -  
Aluminium, anodised black - Standard type, ready to be fitted -  
PR 5/15/SE/M3 = 15 mm, M3-screw mounting or - Other  
lengths and machining on request

